



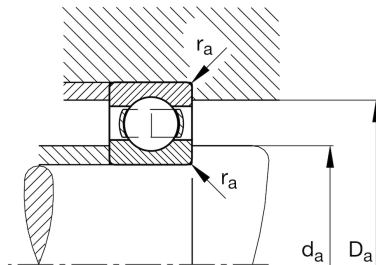
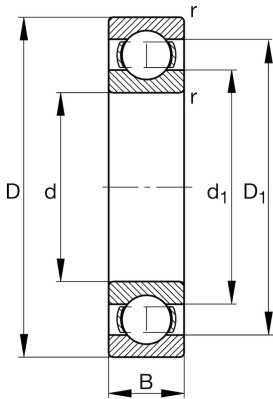
FAG

61811-Y

Deep groove ball bearing

Schaeffler ID:
0787100490000Deep groove ball bearing 618..-Y, single
row, brass sheet metal cage

Technical information

**Dimensions**

r_{\min}	0.3 mm	Minimum chamfer dimension
D_1	66.5 mm	Shoulder diameter outer ring
d_1	60.6 mm	Shoulder diameter inner ring
	0.085 kg	Weight

Main Dimensions & Performance Data

d	55 mm	Bore diameter
D	72 mm	Outside diameter
B	9 mm	Width
C_r	9,600 N	Basic dynamic load rating, radial
C_{0r}	8,500 N	Basic static load rating, radial
C_{ur}	520 N	Fatigue load limit, radial
n_G	17,500 1/min	Limiting speed
n_{gr}	6,600 1/min	Reference speed

Mounting dimensions

$d_{a\min}$	57 mm	Minimum diameter shaft shoulder
$D_{a\max}$	70 mm	Maximum diameter of housing shoulder
$r_{a\max}$	0.3 mm	Maximum fillet radius

Calculation factors

f_0	16.3	Calculation factor
-------	------	--------------------

Temperature range

T_{\min}	-30 °C	Operating temperature min.
T_{\max}	120 °C	Operating temperature max.